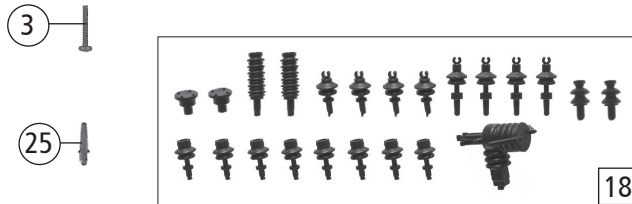


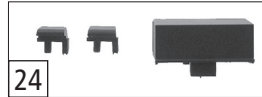
17



18



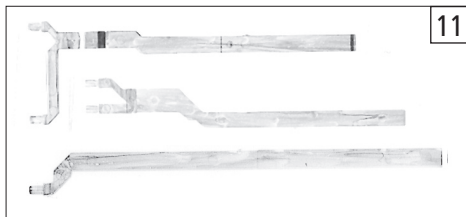
23



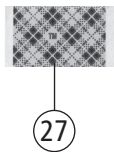
24



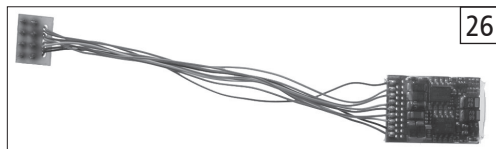
20



11



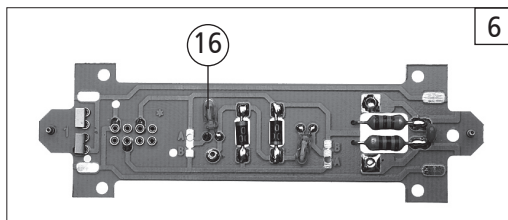
27



22



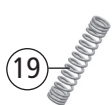
19



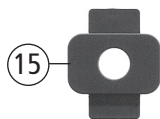
6



14



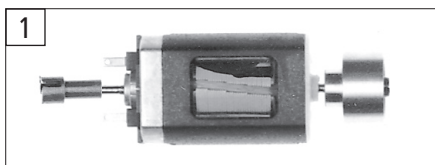
19



15



5



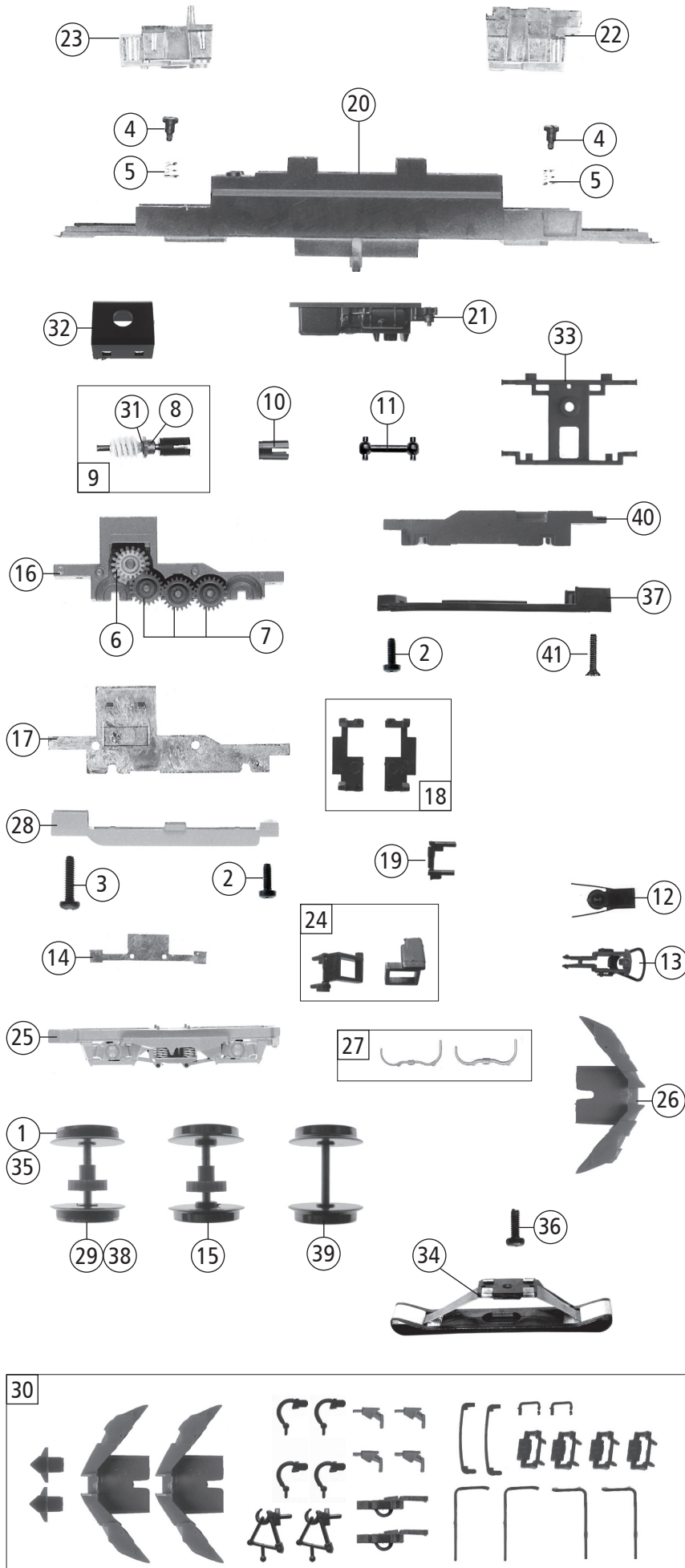
1



13

Pos. Nr. Pos.no.	Beschreibung Description	Art.-Nr. Art.no.	Preisgruppe Price bracket
62655	SJ RC 6		
68655		~	
1	Motor Motor	85117	57
2	Stromabnehmer Pantograph	85385	39
3	Schraube M1,6x8 Screw M1,6x8	85695	2
4	GF-Schraube M2x5 GF-Screw M2x5	114966	2
5	Kardanschale lang Cardan shaft long	87066	3
6	Platine kpl. Printed circuit ass.	128363	43
7	E-Lokführer E-loco driver	89732	5
8	Dachleitung 1 lackiert Roof wire 1 coated	89932	6
9	Dachleitung 2 lackiert Roof wire 2 coated	89933	8
10	Maschinenraumfenster Engine room glazing	94052	6
11	Lichtleitstäbesatz Light transmission bar set	94054	12
12	Stirnfenster Front glazing	94058	6
13	Kardanschale 8mm Cardan bearing 8mm	87152	2
14	Brückenstecker Connector	100644	7
15	Distanzplättchen Spacer	105764	2
16	Drahtlampe 16V Light bulb 16V	109321	10
17	Gehäuse kpl. Betr.nr. Rc6 1412 Body ass. loco no. Rc6 1412	128366	68
18	Isolatorsatz Part set insulator	107161	21
19	Kontaktfeder Contact spring	116876	2
20	Führerstand Drivers cab	107163	8
21	Puffer bedruckt Buffer printed	128369	3
22	Griffstange lang Handrail long	107165	2
23	Hupe u. Stimbügel Horn a. front holder	128368	5
24	TS-Dachaufsatz Part set louver	128367	8
25	Funkantenne Antenna	115112	12
AC - Wechselstrom			
26	Decoder Motorola Decoder Motorola	10732	---
27	Doppelseitiges Klebeband Doublesided adhesive tape	112629	2

Änderungen in Konstruktion und Ausführung vorbehalten
We reserve the right to change the construction and specification



Pos. Nr. Pos.no.	Beschreibung Description	Art.-Nr. Art.no.	Preisgruppe Price bracket
62655	SJ RC 6		
68655		~	
1	Haftringsatz 10Stk. 12,9-14,6mm Set w. traction tiers 10pieces 12,9-14,6mm	40070	---
2	GF-Schraube M2x6 GF-Screw M2x6	114828	2
3	GF-Schraube M2x12 GF-Screw M2x12	114944	2
4	FK-Schraube FK-Screw	85704	3
5	Feder Spring	86202	2
6	Schneckenzahnrad Z=17/19 gelb Worm gear Z=17/19 yellow	86413	4
7	Zahnrad Z=21 Gear Z=21	86414	2
8	Lager für Schneckenachse Bearing for worm axle	89749	6
9	Schneckensatz Worm set	86978	24
10	Kardanschale 8mm Cardan bearing 8mm	87152	2
11	Kardanwelle 9,5mm Caran shaft 9,5mm	87154	2
12	Kupplungskammer Coupling chamber	122495	3
13	Standardkupplung Standard coupling	89246	5
14	Radstromkontakt Wheel current contact strip	89856	3
15	Radsatz ohne Haftring Wheelset without traction tiers	126542	18
16	Getriebekasten Gear box	93150	25
17	Getriebedeckel Gear cover	93151	10
18	TS-Kontakthalter Part set contact holder	113039	12
19	Stossdämpfer Dashpot	126546	2
20	Grundrahmen Base frame	107149	30
21	Batteriekasten Battery box	128362	8
22	Gewicht groß Weight big	107151	22
23	Gewicht klein Weight small	112634	20
24	TS-Leiter Part set ladder	128364	7
25	Blende Blind	126543	5
26	Schieneräumer bedruckt Sweeper printed	126544	6
27	TS-Stahlseile Part set	126548	4
28	Getriebeboden Gear bottom	126549	16
29	Radsatz mit Haftring Wheelset with traction tyre	126550	20
30	Zurüstbeutel Bag with accessories	128370	32
31	Beilagscheibe Washer	86108	2
32	Schneckenkammerdeckel Worm cover	107095	4
33	Unterteil Part	113258	2
AC - Wechselstrom			
34	Schleifer 46mm Slider 46mm	86031	26
35	Haftringsatz 10Stk. 12,5-15,3mm Set w. traction tiers 10pieces 12,5-15,3mm	40075	---
36	GF-Schraube M1,6x4 GF-Screw M1,6x4	114850	2
37	AC-Getriebeboden AC-gear bottom	126556	16
38	Radsatz m. Haftringen m. Zahnrad Wheelset w. traction tiers w. gear	126554	20
39	Radsatz o. Haftring o. Zahnrad Wheelset without traction tiers without gear	126555	18
40	Blindgetriebe Blind transmission	100988	25
41	SK-Schraube M2x10 SK-Screw M2x10	123744	2

Ersatzteile erhalten Sie bei Ihrem Fachhändler, oder Ihrer Landesvertretung:
You can order your Replacement Parts at your local dealer, your country representative: