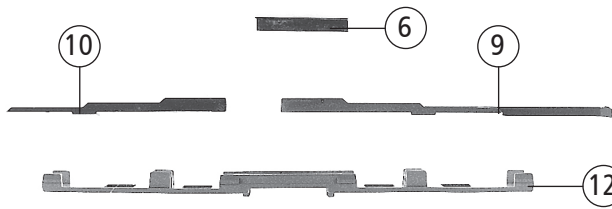
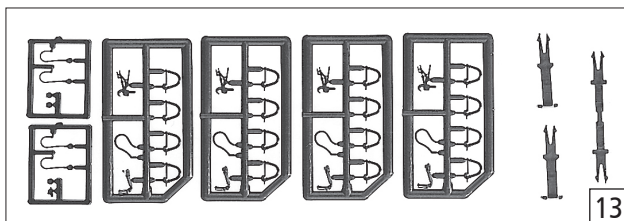
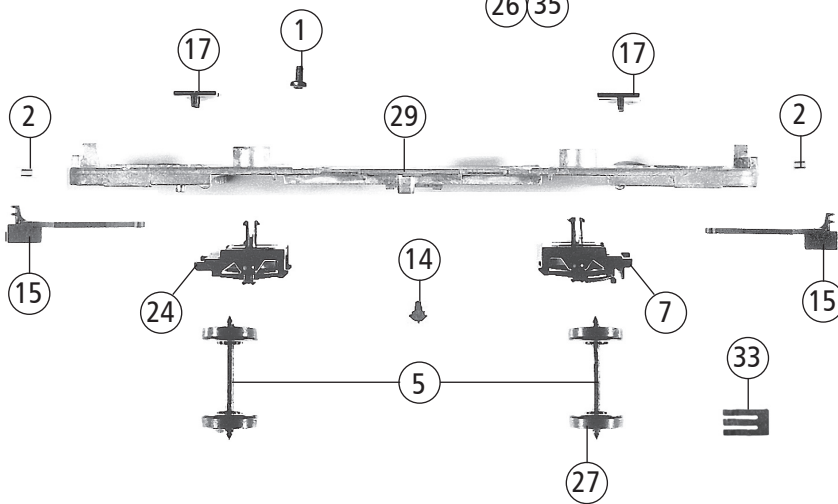
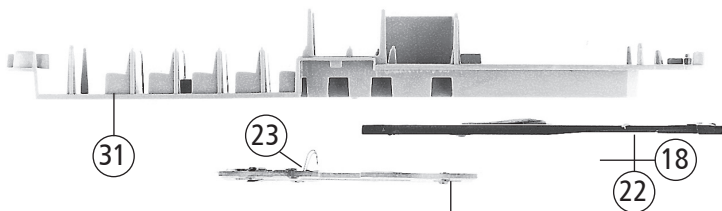
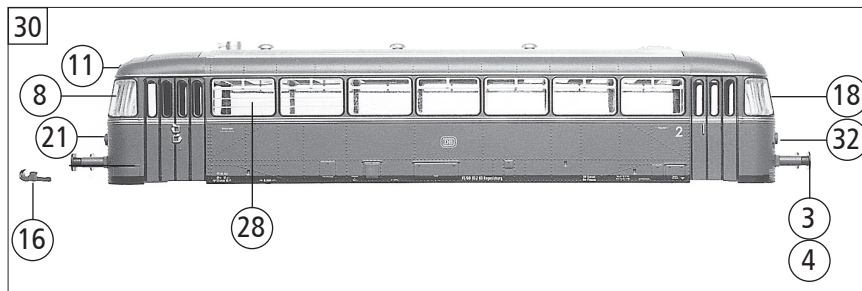


| Pos. Nr. Pos.no. | Beschreibung Description | Art.-Nr. Art.no. | Preisgruppe Price bracket |
|---------------------|---|---------------------|------------------------------|
| 1 | Motor komplett Motor assembly | 85069 | 57 |
| 2 | Schraube M2x6 Screw M 2x6 | 85672 | 2 |
| 3 | Zugfeder Pull spring | 86208 | 2 |
| 4 | Schneckenzahnrad Worm gear | 86419 | 5 |
| 5 | Zahnrad Z=19/12 M 0,4 Gear T=19/12 M 0,4 | 86424 | 3 |
| 6 | Schneckensatz Worm set | 86980 | 24 |
| 7 | Kardanschale Cardan bearing | 87152 | 2 |
| 8 | Kardanwelle Cardan shaft | 87211 | 4 |
| 9 | Puffer flach Buffer flat | 88581 | 3 |
| 10 | Puffer gewölbt Buffer vaulted | 88582 | 3 |
| 11 | Kupplungssatz Coupling set | 89215 | 10 |
| 12 | Achse D=2,6x9,3mm Axle D=2,6x9,3mm | 89700 | 3 |
| 13 | Zahnradachse D=2,6x11,5mm Axle D=2,6x11,5mm | 89701 | 3 |
| 14 | Lokführer Loco driver | 89732 | 5 |
| 15 | Lager für Schneckenachse Worm axle bearing | 89749 | 6 |
| 16 | Radsatz m. Zahnrad o. Haftring Wheelset with gear without traction tires | 90378 | 18 |
| 17 | Schneckendeckel Worm cover | 94148 | 6 |
| 18 | Achslager 1 Axlebearing 1 | 94149 | 4 |
| 19 | Achslager 2 Axlebearing 2 | 94150 | 4 |
| 20 | Achslager 3 Axlebearing 3 | 94151 | 4 |
| 21 | Achslager 4 Axlebearing 4 | 94152 | 4 |
| 22 | Kupplungsdeichsel Holder for coupling | 94154 | 4 |
| 23 | Blechwinkel Plate angle | 94155 | 12 |
| 24 | Lichtleiter Light transmission bar 1 | 94160 | 4 |
| 25 | Lichtleiter 2 Light transmission bar 2 | 94161 | 4 |
| 26 | Strinlinse D=3 Front lens D=3 | 94163 | 2 |
| 27 | Seitenfenster Side window | 94165 | 10 |
| 28 | Träger Girder | 94167 | 6 |
| 29 | Stirnfenster mit Wischer Front window with wiper | 97928 | 9 |
| 30 | Brückenstecker Bridge connector | 100644 | 7 |
| 31 | Drahtlampe T3/4 16V 30mA Bulb with leds T3/4 16V 30mA | 108616 | 10 |
| 32 | Blende Frame | 108757 | 4 |
| 33 | Lichtleiter Light transmission | 108766 | 4 |
| 34 | Modulhalter Modul holder | 108771 | 6 |
| 35 | Hülseenteil Sleeve part | 109134 | 2 |
| 36 | Platine mitte Printed middle circuit | 109135 | 24 |
| 37 | Drahtlampe T3/4 16V/30mA Bulb with leds T3/4 16 V/30mA | 109321 | 10 |
| 38 | Achszahnrad mit Zahnradachse Gear set | 112673 | 4 |
| 39 | Getriebedeckel Gear cover | 112963 | 6 |
| 40 | Platine unten Printed circuit below | 112968 | 48 |
| 41 | Platine oben Printed circuit above | 112969 | 26 |
| 42 | Beilagscheibe Washer | 113942 | 2 |
| 43 | GF-Schraube M2x4 GF-Screw M2x4 | 114877 | 2 |
| 44 | GF-Schraube M2x5 GF-Screw M2x5 | 114966 | 2 |
| 45 | SK-Schraube M2x6 SK-Screw M2x6 | 85682 | 2 |
| 46 | Bodenplatte Base plate | 112965 | 30 |
| 47 | Gehäuse komplett Betr. Nr. FER-301 Body assembly Loco no. FER-301 | 130736 | 64 |
| 48 | Inneneinrichtung Interiors fittings | 130737 | 18 |
| 49 | Stirnlins D=2,95 Front lens D=2,95 | 123798 | 3 |
| 50 | TS-Gehäuse lackiert Part set body coated | 122559 | 12 |
| Sound | | | |
| 51 | Doppelseitiges Klebeband Doublesided adhesive tape | 112629 | 2 |
| 52 | Lautsprecher Loudspeaker | 129524 | 31 |
| 53 | Sounddecoder Sounddecoder | 129801 | 80 |

34 o. Abb. / no ill.
Lichtwechseldecoder
Light variation decoder



19 25 20 o. Abb. / no ill.
Etikette, schwarz
Label, black



| Pos. Nr. Pos.no. | Beschreibung Description | Art.-Nr. Art.no. | Preisgruppe Price bracket |
|---------------------|---|---------------------|------------------------------|
| 63036 | RENFE VT98 | = | |
| 63037 | | = | |
| 1 | Schraube 1,6x3 Screw 1,6x3 | 85658 | 2 |
| 2 | Zugfeder Tensile spring | 86208 | 2 |
| 3 | Puffer flach Buffer flat | 88581 | 3 |
| 4 | Puffer gewölbt Buffer vaulted | 88582 | 3 |
| 5 | Radsatz ohne Zahnrad VS Wheelset without gear, driving trailer | 90379 | 14 |
| 6 | Blechwinkel Plate angle | 94155 | 12 |
| 7 | Achslager Axlebearing driving trailer | 94157 | 12 |
| 8 | Stirnfenster ohne Wischer Front glazing without wiper | 94159 | 9 |
| 9 | Lichtleiter 1 Light transmission bar 1 | 94160 | 4 |
| 10 | Lichtleiter 2 Light transmission bar 2 | 94161 | 4 |
| 11 | Stirnlinse Front lens | 94163 | 2 |
| 12 | Träger Girder | 94167 | 6 |
| 13 | Zurüstbeutel Bag with accessories | 94170 | 24 |
| 14 | WC-Abflußrohr Drainpipe | 94179 | 3 |
| 15 | Kupplungsdeichsel Holder for coupling | 94180 | 4 |
| 16 | Sicherungshaken für VT u. VS Locking hook for VT u. VS | 94184 | 2 |
| 17 | Deichselniederhalter Holder for towing bar | 94187 | 4 |
| 18 | Stirnfenster mit Wischer Front window with wiper | 97928 | 9 |
| 19 | Drahtlampe T3/4 16V 30mA Bulb with leds T3/4 16V 30mA | 108616 | 10 |
| 20 | Etikette schwarz Label, black | 125283 | 2 |
| 21 | Stirnlinse D=2 kurz Front lens D=2 short | 108765 | 3 |
| 22 | Lichtleiter Light transmission | 108766 | 4 |
| 23 | Drahtlampe 16V Bulb with leads 16V | 111590 | 10 |
| 24 | Achslager mit Kontakt hinten Axle bearing with contact f. driving trailer | 112966 | 14 |
| 25 | Platine oben Printed circuit above, driving trailer | 112969 | 45 |
| 26 | Platine unten Printed circuit below | 112971 | 40 |
| 27 | Radsatz für Umschalter Wheelset for switch driving trailer | 112999 | 14 |
| 28 | Seitenfenster Side window driving trailer | 113987 | 10 |
| 29 | Bodenplatte für Steuerwagen Base plate for driving trailer | 113002 | 30 |
| 30 | Gehäuse komplett für Steuerwagen FRC-301 Body assembly for driving FRC-301 | 130738 | 64 |
| 31 | Inneneinrichtung für Steuerwagen Interior fittings for driving trailer | 112964 | 16 |
| 32 | Stirnlinse D=2,95 Front lens D=2,95 | 123798 | 3 |
| 33 | Schwenkontakt Rotating contactless | 89984 | 3 |
| Sound | | | |
| 34 | Lichtwechseldecoder o. Abb. Light variation decoder no ill. | 112967 | 45 |
| 35 | Platine unten Printed circuit below | 112970 | 40 |

Ersatzteile erhalten Sie bei Ihrem Fachhändler, oder Ihrer Landesvertretung:
You can order your Replacement Parts at your local dealer, your country representative: