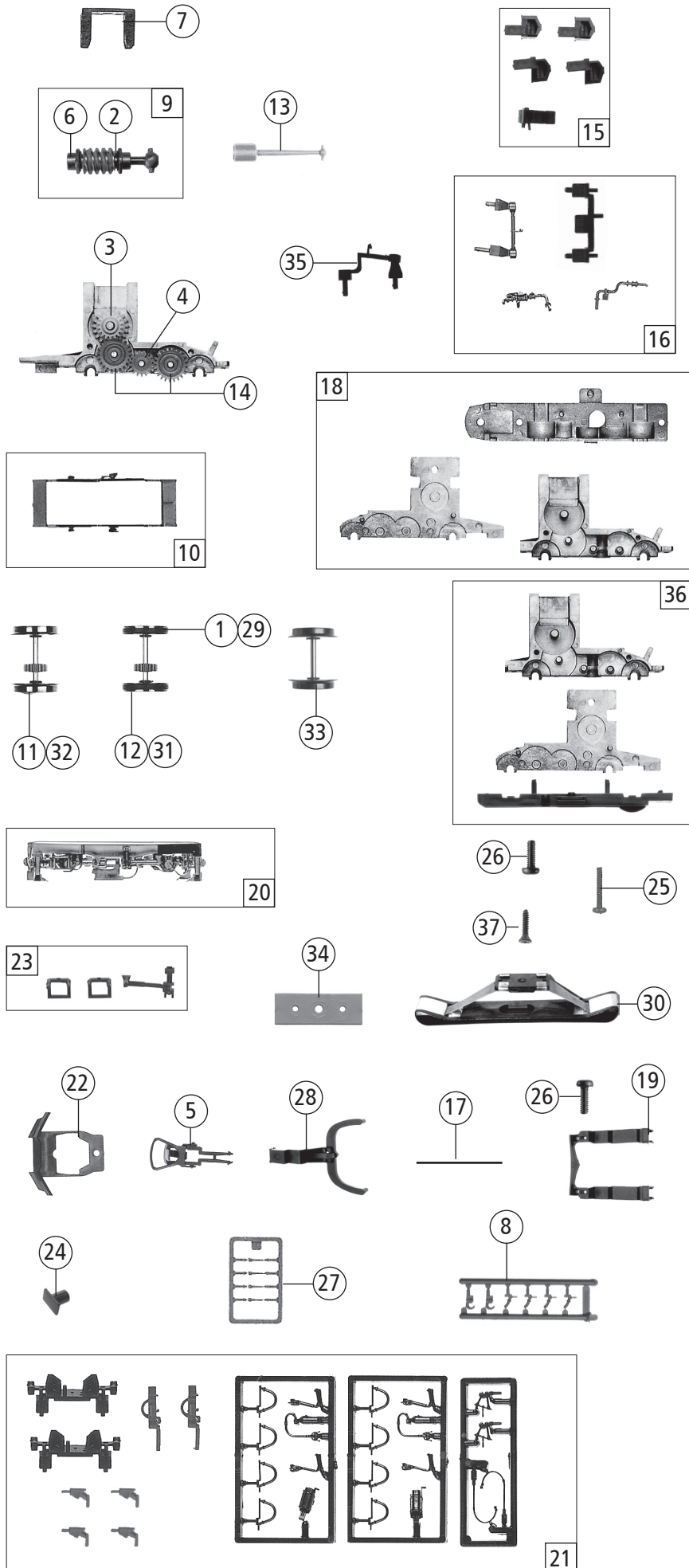


| Pos. Nr. Pos.no. | Beschreibung Description | Art.-Nr. Art.no. | Preisgruppe Price bracket |
|--------------------------|--|---------------------|------------------------------|
| 62528 | CFL Cargo BR 185 | | |
| 68528 | | | |
| 1 | Motor komplett Motor assembly | 85111 | 57 |
| 2 | Stromabnehmer Pantograph | 85383 | 39 |
| 3 | FK - Schraube FK - Screw | 85771 | 3 |
| 4 | Feder Spring | 86202 | 2 |
| 5 | Kardanschale Cardan bearing | 87129 | 3 |
| 6 | Distanzplättchen Spacer | 106116 | 2 |
| 7 | Brückenstecker Bridge connector | 100644 | 7 |
| 8 | Anschlag Bedstop | 114651 | 2 |
| 9 | Schraube M1,6x5 Screw M1,6x5 | 110008 | 2 |
| 10 | Platine komplett Printed circuit assembly | 126703 | 38 |
| 11 | Stirnfenster Front window | 116667 | 8 |
| 12 | TS - Gehäuse Parts set body | 114802 | 12 |
| 13 | Dachleitung rot mittig Roof wire red | 120680 | 3 |
| 14 | Drahtlampe 16 V Light bulb 16 V | 109321 | 10 |
| 15 | Gehäuse komplett Betr. Nr. 185 523-8 Body assembly loco no. 185 523-8 | 130448 | 74 |
| 16 | TS - Fenster-Lichtleitstäbe Part set window-lights transmission bar | 108030 | 18 |
| 17 | Griff waagrecht kurz Handrails horizontally short | 115768 | 2 |
| 18 | Griff senkrecht Handrail vertical | 115767 | 2 |
| 19 | Griff waagrecht lang Handrails horizontally long | 115769 | 2 |
| 20 | Haltegriff seitlich Handrail on the side | 108033 | 4 |
| 21 | GF-Schraube M2x5 GF-Screw M2x5 | 114966 | 2 |
| 22 | Grundrahmen Frame | 115765 | 36 |
| 23 | TS-Führerst.+Lichtabdeckung Part set driver cab, light cover | 108031 | 7 |
| 24 | Makrofon groß Horn big | 116984 | 2 |
| 25 | Lampenflexplatine Flexible print. circuit for bulbs | 112270 | 27 |
| 26 | Stromabnehmerisolator Insulator for pantograph | 112865 | 2 |
| 27 | Isolator schräg Insulator inclined | 112869 | 2 |
| 28 | Batteriekasten Battery box | 112872 | 6 |
| 29 | Federdeckelsatz Part set cover | 121368 | 6 |
| 30 | Videokamera rechts u. links Video camera right a. left | 121328 | 7 |
| 31 | Makrofon klein Horn little | 130449 | 2 |
| AC - Wechselstrom | | | |
| 32 | Decoder Decoder | 10732 | --- |



| Pos. Nr. Pos.no. | Beschreibung Description | Art.-Nr. Art.no. | Preisgruppe Price bracket |
|------------------------|---|---------------------|------------------------------|
| 62528 | CFL Cargo BR 185 | = | |
| 68528 | | ~ | |
| 1 | Hafringesatz 10Stk. 12,9-14,6mm Set with traction tires 10pieces 12,9-14,6mm | 40070 | --- |
| 2 | Beilagscheibe Washer | 86108 | 2 |
| 3 | Schneckenzahnrad Z=17/19 Worm gear Z=17/19 | 86413 | 4 |
| 4 | Zahnrad Z=17 Gear Z=17 | 86418 | 4 |
| 5 | Standardkupplung komplett Standard couoling assembly | 89246 | 5 |
| 6 | Lager für Schneckenachse Worm axle bearing | 89749 | 6 |
| 7 | Schneckendeckel Worm cover | 94707 | 3 |
| 8 | Attrappenrahmen klein Push in part set, small | 107808 | 3 |
| 9 | Schneckensatz Wormset | 108022 | 24 |
| 10 | Kontaktthalterahmen kpl. Current contact frame ass. | 108027 | 8 |
| 11 | Radsatz ohne Hafringe mit Zahnrad Wheelset without traction tires, with gear | 108028 | 18 |
| 12 | Radsatz mit 2 Hafringen Wheelset with 2 traction tires | 108029 | 20 |
| 13 | Kardanwelle Cardan shaft | 108332 | 3 |
| 14 | Zahnrad Z=23 Gear Z=23 | 86425 | 2 |
| 15 | Teilesatz Parts set | 112874 | 6 |
| 16 | Teilesatz Parts set | 112875 | 8 |
| 17 | Drahtfeder Spring | 112876 | 2 |
| 18 | Teilesatz (Getriebe) Parts set (Gear) | 120055 | 19 |
| 19 | Kinematikplatte Kinematics plate | 112881 | 2 |
| 20 | Drehgestellblende kpl. Bogie frame assembly | 112878 | 35 |
| 21 | Zurüstbeutel Bag with accessories | 116410 | 25 |
| 22 | Schienenräumer Snow plugs | 113318 | 6 |
| 23 | Teilesatz Treppe/Dämpfer Parts set Step/Damper | 113319 | 6 |
| 24 | Puffer Buffer | 113448 | 2 |
| 25 | GF-Schraube M1,6x8 GF-Screw M1,6x8 | 115037 | 2 |
| 26 | GF-Schraube M1,6x5 GF-Screw M1,6x5 | 115269 | 2 |
| 27 | Steckdosenrahmen Frame with plugs | 115771 | 3 |
| 28 | Deichsel Drawber | 116044 | 3 |
| AC-Wechselstrom | | | |
| 29 | Hafringesatz 10Stk. 12,5-15,3mm Set with traction tires 10pieces 12,5-15,3mm | 40075 | --- |
| 30 | Schleifer 42mm Wiper 42mm | 86030 | 26 |
| 31 | Radsatz mit 2 Hafringen Wheelset with 2 traction tires | 108040 | 20 |
| 32 | Radsatz ohne Hafring mit Zahnrad Wheelset without traction tyre with gear | 108041 | 18 |
| 33 | Radsatz ohne Hafringe o. Zahnrad Wheelset without traction tyre without gear | 108042 | 16 |
| 34 | AC-Isolierplatte AC-Insulating cover | 110201 | 3 |
| 35 | Zugkraftanlenkung Pivot point | 113320 | 2 |
| 36 | Getriebe -3-teilig AC Gear 3-parts AC | 120060 | 19 |
| 37 | SK-Schraube M1,6x5 SK-Screw M1,6x5 | 115317 | 3 |

Ersatzteile erhalten Sie bei Ihrem Fachhändler, oder Ihrer Landesvertretung:
You can order your Replacement Parts at your local dealer, your country representative: